

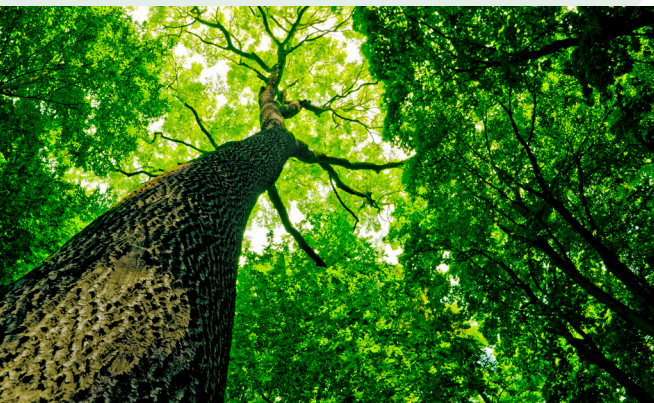


WORKPLACE LIGHTING

Item Number: 300550

DESK LIGHT HORIZON BLACK

Happiness at work



DESIGNED FOR  DANISH STANDARDS

Desk Light Horizon Black

Good lighting is important for our well-being and productivity, and when it comes to our workspace, lighting over the desk is crucial. A well-lit workplace boosts our energy and concentration, improves our vision, and reduces the risk of headaches and eye strain. Lack of or poor lighting can lead to fatigue, lethargy, and can affect our mental health, which in turn can impact our performance at the workplace.

With the Desk Light Horizon, you can adjust the brightness and color temperature according to your preferences and work needs, creating a more personal and comfortable workspace. Proper workplace lighting will also help to reduce eye strain and headaches.

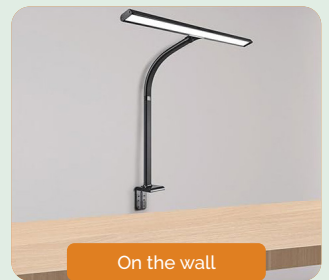
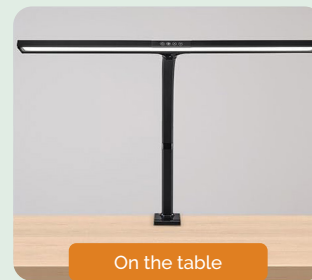
So, if you want to optimize your workspace and improve your productivity, the Desk Light Horizon is a good investment. It's a simple way to create a more comfortable and efficient workspace, while simultaneously taking care of your health and well-being.



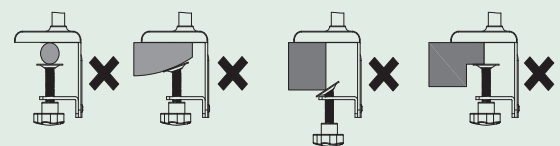
Product Overview

Light Source	LED
Input Voltage (V)	AC100-240V
Power	20W
Color Rendering Index (CRI (RA>))	≥90
Color Temperature	3000-6500K
Luminous Flux	1800lm
Material of Lamp Body	ABS+Aluminum
Features	Dimmable in 4 color temperatures & 5 brightness levels, 30/60 minute timer, Auto ISO

The lamp can be installed in 2 ways



⚠ Do not mount the base in these situations



⚠ Usage

- The desk lamp is for indoor use only.
- Immediately unplug the AC adapter if the desk lamp gets damaged to avoid electric shock.
- Do not place the desk lamp near open fire, electric cookers, and toaster ovens.
- Keep the lamp away from pets to avoid damage to the lamp.

ON/OFF: A light touch turns the lights on, touch again to turn off. A long press for 3 seconds with the indicator flashing, the lamp will automatically turn off after 30 seconds.

Color Temperature: Four color temperatures to choose from, starting with daylight, natural white, cool white, and warm white.

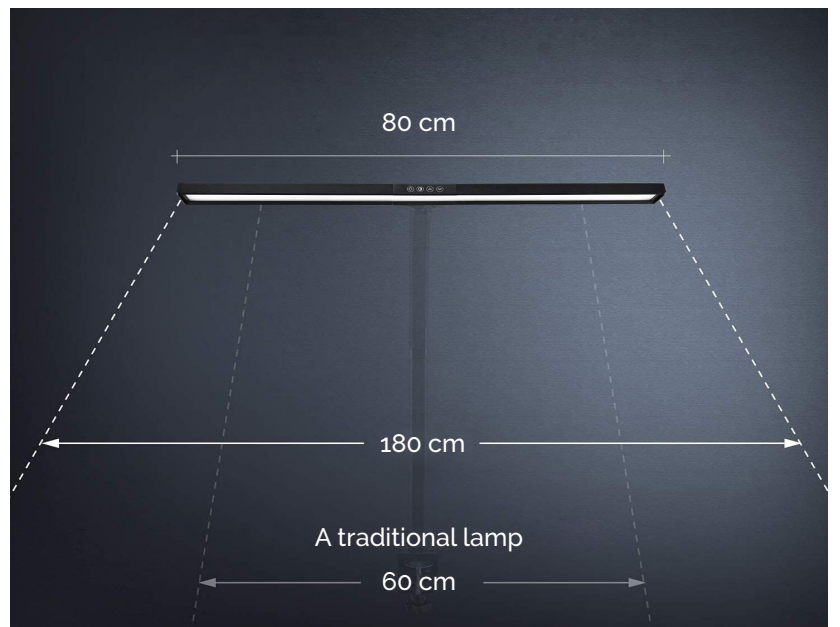
Brightness: Five levels of brightness, the original state is 60%, then changes by + - 20%.

Automatic Dimming: Touch the automatic dimming sensor, the indicator turns on, and the automatic dimming function starts. Touch again to turn off the function.

Time Switch: Gently touch the time switch key, the time switch is set to 30 minutes/60 minutes, the corresponding indicator lights turn on, and the third touch turns off the time function. This function is used in light therapy.

Memory Function: When you turn off normally, the lamp can remember the brightness settings from your last use. In case of a power failure, it returns to the original state.

Fleksible Gooseneck



Custom FIT

Individual Workplace Adjustment

Your employees are different and work differently. With a Custom FIT, we review each employee's workplace with the aim of ensuring optimal working conditions for the individual.

A Custom FIT includes an ergonomic review of the employee's body position in the working situation, with special focus on the back and neck, where many experience problems. At the same time, we make measurements and observations in relation to air, light, and sound.

During the review, we primarily solve the challenges that can be handled with a better arrangement of the existing work tools. This may involve adjusting the chair, desk height, or rear-

anging items on the desk. In addition, we guide the employee on what they themselves can be aware of in relation to maintaining a good work posture.

After reviewing all employees' work situations, we compile a set of recommendations for the management with initiatives that will optimize the working conditions for each individual.

BONUS:

With all Custom FIT reviews, we provide a package with tools for light exercises throughout the work day.



ERGONOMICS



ACOUSTICS



INDOOR CLIMATE



WELL-BEING



Read and see more at xsystems.dk or contact us now at **tel. 0045 86 85 43 43** or salg@xsystems.dk

Ergonomic Review

A review takes approximately 15-20 min. per employee. If something can be corrected on the spot, we do it together with the employee.