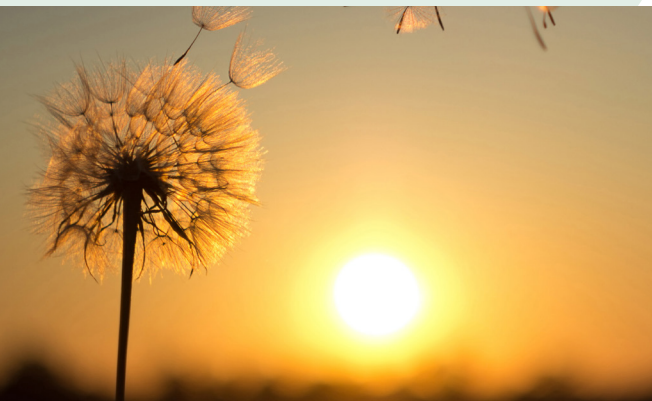




ERGONOMICS
Item Number: 300840

FLEX CHAIR

Perhaps the most flexible, ergonomic, and stable chair
of its kind on the market!



DESIGNED FOR  DANISH STANDARDS

Flex Chair

Flex Chair from Xsystems is a versatile chair suitable for many purposes. It is designed to offer the greatest possible mobility while sitting and at the same time, provide high comfort in the seat. Whether you choose the round or triangular seat, you get a chair that is at the same time ergonomic and comfortable to sit on.

The specially developed moving concept in the base of the chair allows it to tilt in all directions. No matter how high the chair is adjusted, there is no risk of it tipping over. The low center of gravity is formed by a steel plate at the bottom of the base, and the built-in bushing naturally stops the tilting effect at about 20 degrees.

The effect of sitting on the Flex Chair is noticeable. It is extremely easy to get on and off as you just rotate into place or away again. The muscles around the lumbar region and the core muscles are naturally stimulated by both the rotation and tilting effects. With the Flex Chair, you do not just sit or stand. You can find suitable intermediate positions, where you can advantageously stretch your knees and thus increase blood circulation in your legs.



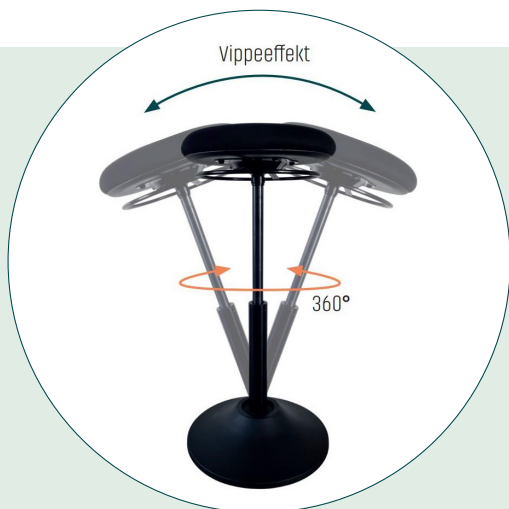
Specifications:

Weight:	Approx. 11.5 kg
Materials cylinder:	Powder coated steel and stainless steel
Materials base:	Steel, polypropylene, rubber/ steel bushing
Materials seat:	Polyelastic foam, PU or coated fabric as a surface on the base of polypropylene. Steel hoop/rod and aluminum fittings.
Highest position:	795 mm
Lowest position:	540 mm



Flex Chair is available with two types of seats – each with two types of upholstery. The round seat is the most versatile and with a core of polyelastic foam, it offers fantastic comfort for long sitting periods.

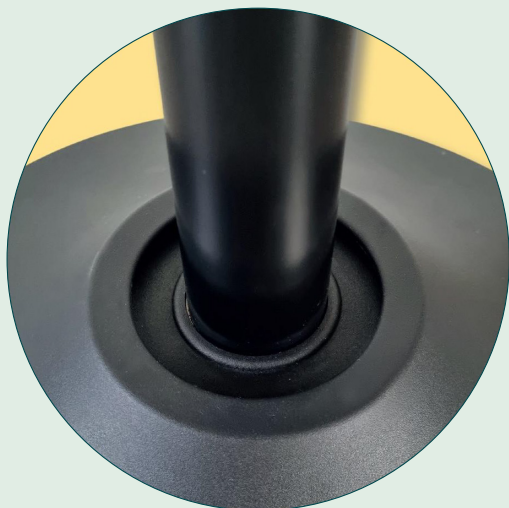
The triangular seat provides a bit more support at the back. The comfort is top-notch, and it reduces pressure discomfort from prolonged sitting work. The triangular seat is adjusted with a pawl under the bends, and the round seat with a ring placed under the edge of the seat.



The Flex Chair can tilt about 20 degrees in all directions while also rotating 360 degrees.



The height of the Flex Chair is adjusted just under the seat. The handle is made round, so it can be found no matter how one sits and reaches for it.



The unique patent in the base of the chair provides stability and flexibility at the same time. The bushing offers a unique tilting effect, which helps to strengthen the back and core muscles.



Both chair models (triangular or round) are available with either PU artificial leather or Teflon-coated fabric. Both types are extremely durable, dirt/moisture repellent and washable.

Custom FIT

Individual Workplace Adjustment

Your employees are different and work differently. With a Custom FIT, we review each employee's workplace with the aim of ensuring optimal working conditions for the individual.

A Custom FIT includes an ergonomic review of the employee's body position in the working situation, with special focus on the back and neck, where many experience problems. At the same time, we make measurements and observations in relation to air, light, and sound.

During the review, we primarily solve the challenges that can be handled with a better arrangement of the existing work tools. This may involve adjusting the chair, desk height, or rear-

anging items on the desk. In addition, we guide the employee on what they themselves can be aware of in relation to maintaining a good work posture.

After reviewing all employees' work situations, we compile a set of recommendations for the management with initiatives that will optimize the working conditions for each individual.

BONUS:

With all Custom FIT reviews, we provide a package with tools for light exercises throughout the work day.



ERGONOMICS



WORKPLACE LIGHTING



ACOUSTICS



INDOOR CLIMATE



WELL-BEING



Read and see more at **xsystems.dk** or contact us now at **tel. 0045 86 85 43 43** or **salg@xsystems.dk**

Ergonomic Review

A review takes approximately 15-20 min. per employee. If something can be corrected on the spot, we do it together with the employee.